



# Nash County

North Carolina

**Draft**

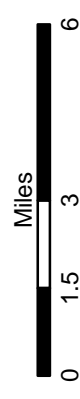
## Comprehensive Transportation Plan

Plan date: July, 2011

- Sheet 1 Adoption Sheet
- Sheet 2 Highway Map
- Sheet 3 Public Transportation and Rail Map
- Sheet 4 Bicycle Map
- Sheet 5 Pedestrian Map

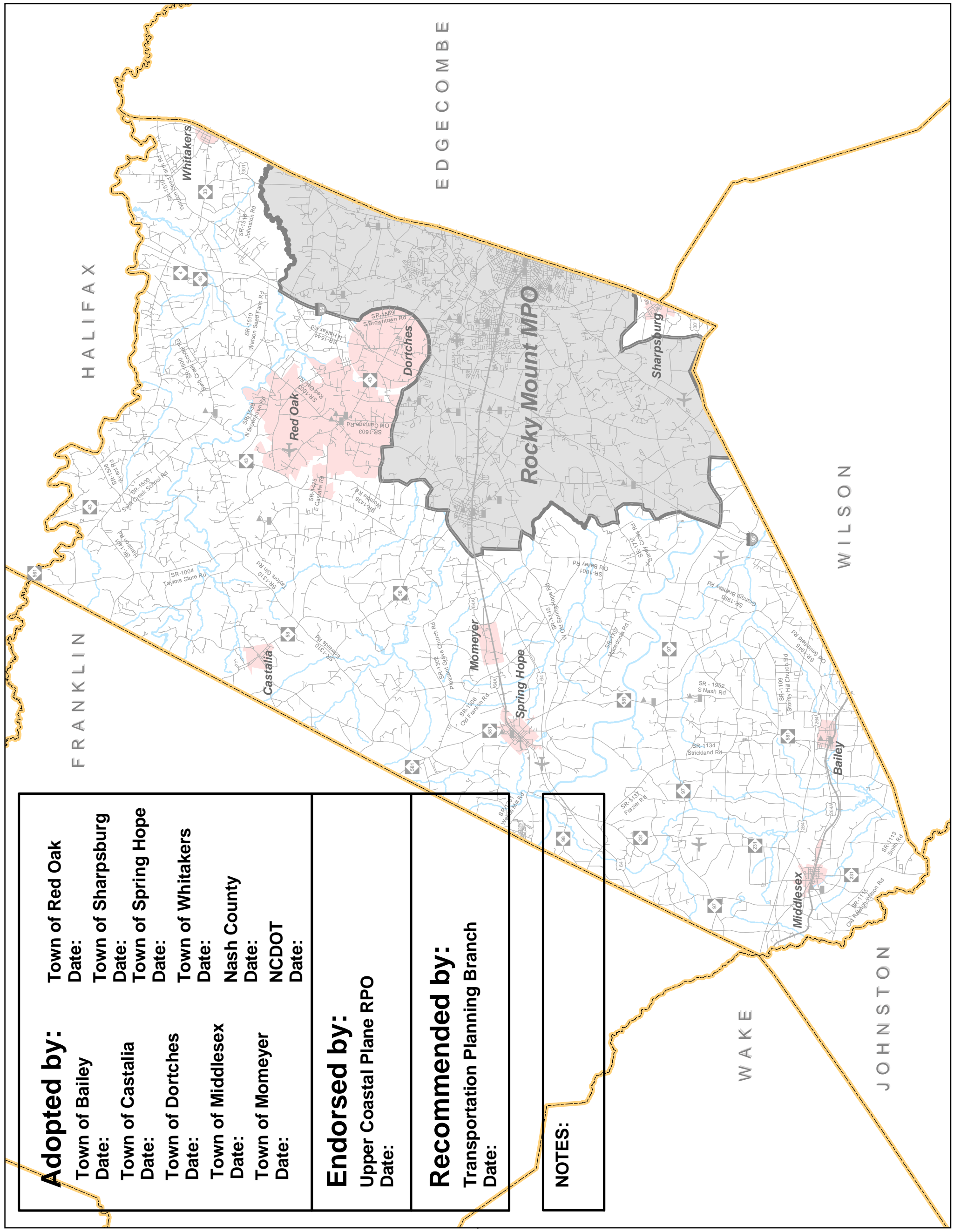
### Legend

- County Boundary
- Rocky Mount MPO
- Municipal Boundary
- Roads
- Railroad
- Schools
- Rivers and Streams
- Airports



Sheet 1 of 10

Base map date: November, 2010  
Refer to CTP document for more details



**Adopted by:**  
 Town of Red Oak  
 Date:  
 Town of Bailey  
 Date:  
 Town of Castalia  
 Date:  
 Town of Dortches  
 Date:  
 Town of Middlesex  
 Date:  
 Town of Momeyer  
 Date:  
 Nash County  
 Date:  
 NCDOT  
 Date:

**Endorsed by:**  
 Upper Coastal Plane RPO  
 Date:

**Recommended by:**  
 Transportation Planning Branch  
 Date:

**NOTES:**



# Public Transportation and Rail Map

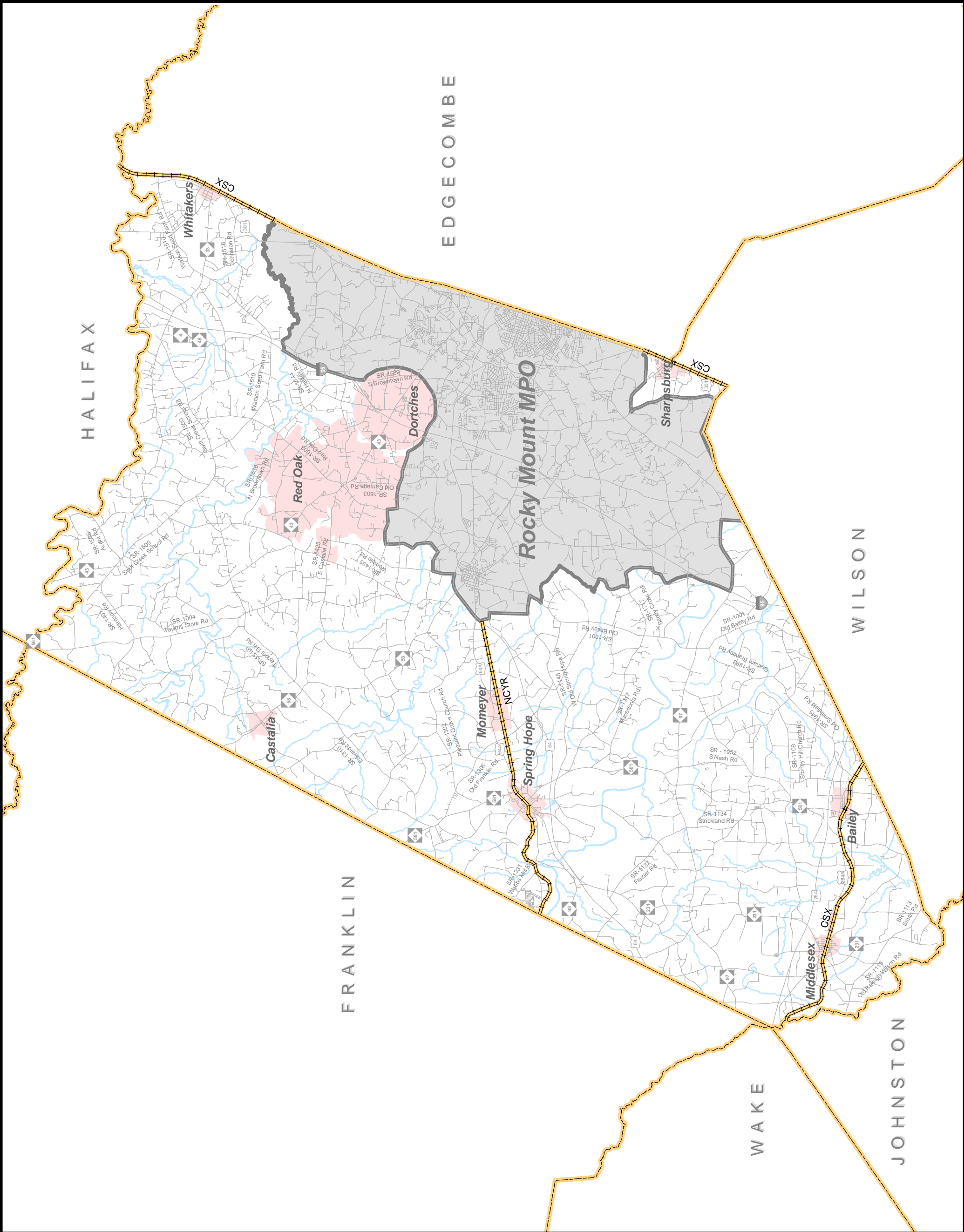
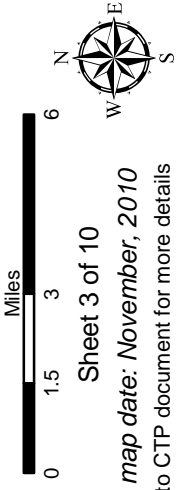


## Nash County Draft

### Comprehensive Transportation Plan

Plan date: July, 2011

- Bus Routes**
  - Existing
  - Needs Improvement
  - Recommended
- Fixed Guideway**
  - Existing
  - Needs Improvement
  - Recommended
- Operational Strategies**
  - Existing
  - Needs Improvement
  - Recommended
- Rail Corridor**
  - Active
  - Inactive
  - Recommended
- High Speed Rail Corridor**
  - Existing
  - Recommended
- Rail Stops**
  - Existing
  - Recommended
- Intermodal Connector**
  - Existing
  - Recommended
- Park and Ride Lot**
  - Existing
  - Recommended



HALIFAX

EDGE COMBE

WILSON

FRANKLIN

WAKE

JOHNSTON

# Bicycle Map



## Nash County Draft Comprehensive Transportation Plan

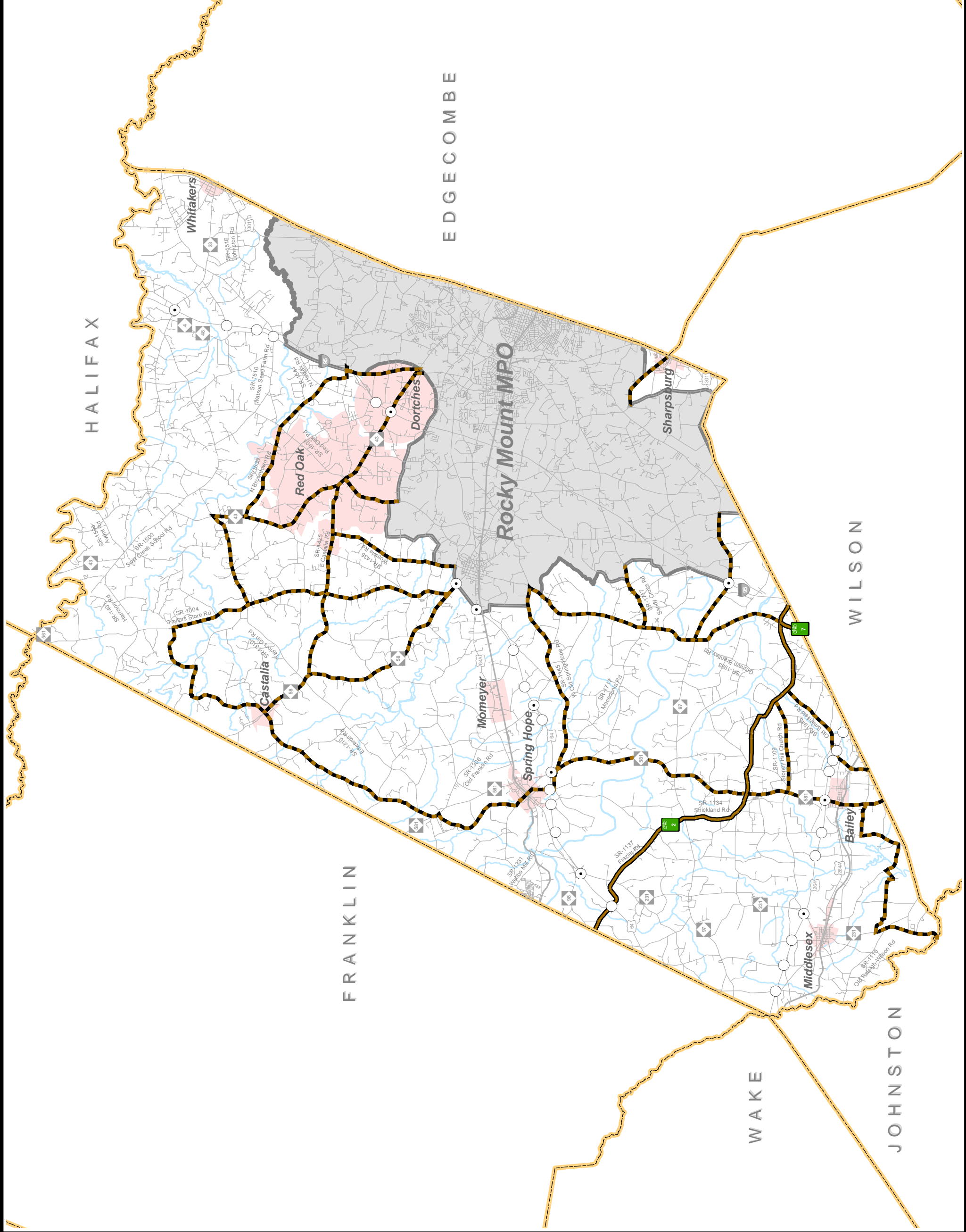
Plan date: May, 2011

- |                        |  |                           |
|------------------------|--|---------------------------|
| <b>On-road</b>         |  | Existing                  |
|                        |  | Needs Improvement         |
|                        |  | Recommended               |
| <b>Off-road</b>        |  | Existing                  |
|                        |  | Needs Improvement         |
|                        |  | Recommended               |
| <b>Multi-Use Paths</b> |  | Existing                  |
|                        |  | Needs Improvement         |
|                        |  | Recommended               |
|                        |  | Existing Interchange      |
|                        |  | Existing Grade Separation |



Sheet 4 of 10

Base map date: November, 2010  
Refer to CTP document for more details



# Pedestrian Map



## Nash County Comprehensive Transportation Plan

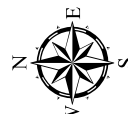
Plan date: July, 2011

# Draft

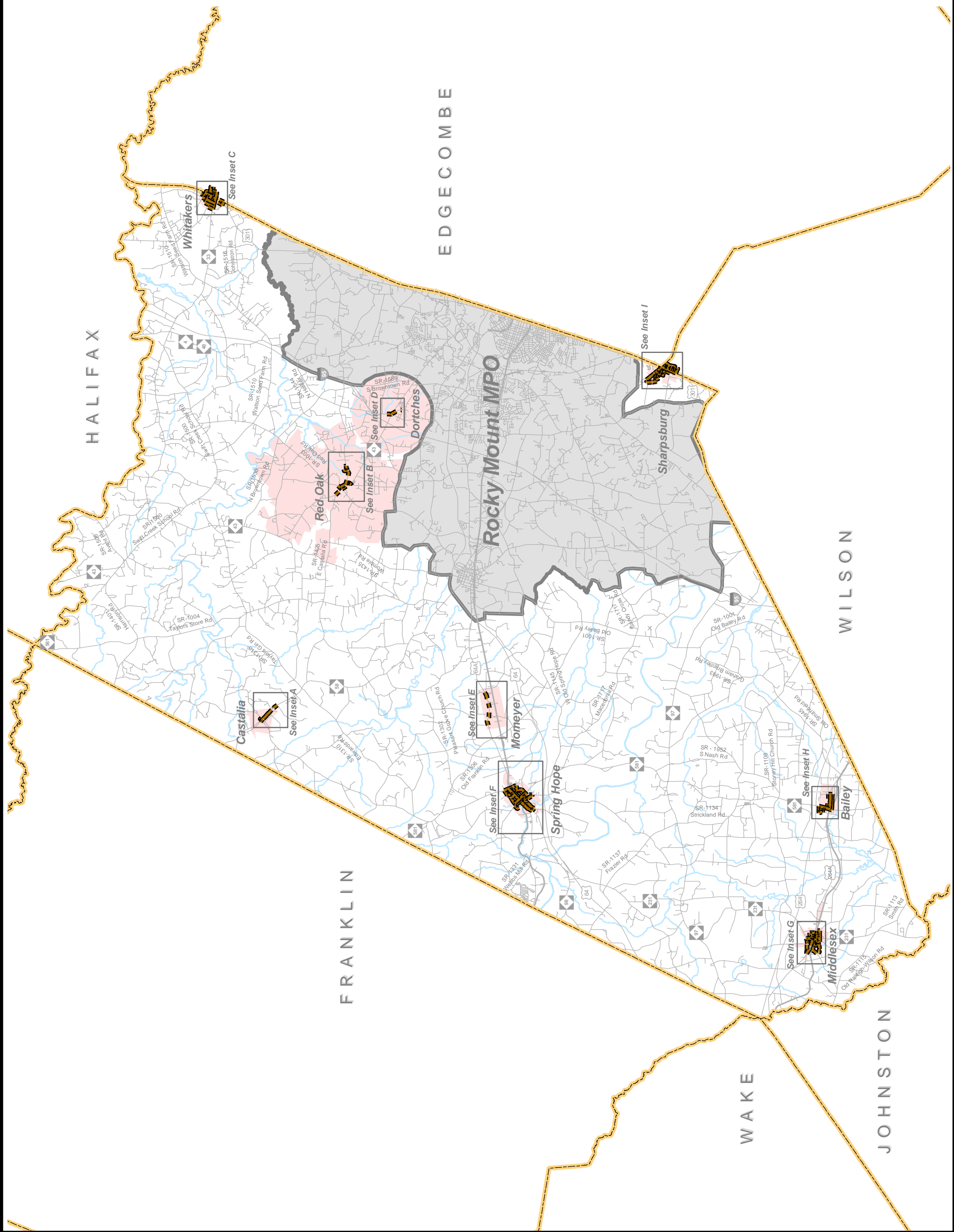
- |                        |  |                   |
|------------------------|--|-------------------|
| <b>Sidewalks</b>       |  | Existing          |
|                        |  | Needs Improvement |
|                        |  | Recommended       |
| <b>Off-road</b>        |  | Existing          |
|                        |  | Needs Improvement |
|                        |  | Recommended       |
| <b>Multi-Use Paths</b> |  | Existing          |
|                        |  | Needs Improvement |
|                        |  | Recommended       |



Sheet 5 of 10



Base map date: November, 2010  
Refer to CTP document for more details



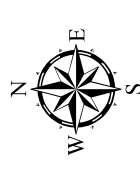


# Nash County Comprehensive Transportation Plan

Plan date: July, 2011

**Draft**

- |                        |          |                   |             |
|------------------------|----------|-------------------|-------------|
| <b>Sidewalks</b>       | Existing | Needs Improvement | Recommended |
| <b>Off-road</b>        | Existing | Needs Improvement | Recommended |
| <b>Multi-Use Paths</b> | Existing | Needs Improvement | Recommended |



Sheet 5A of 5

Base map date: November, 2010  
Refer to CTP document for more details



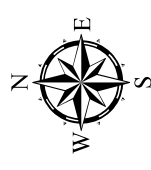


# Nash County Comprehensive Transportation Plan

Plan date: July, 2011

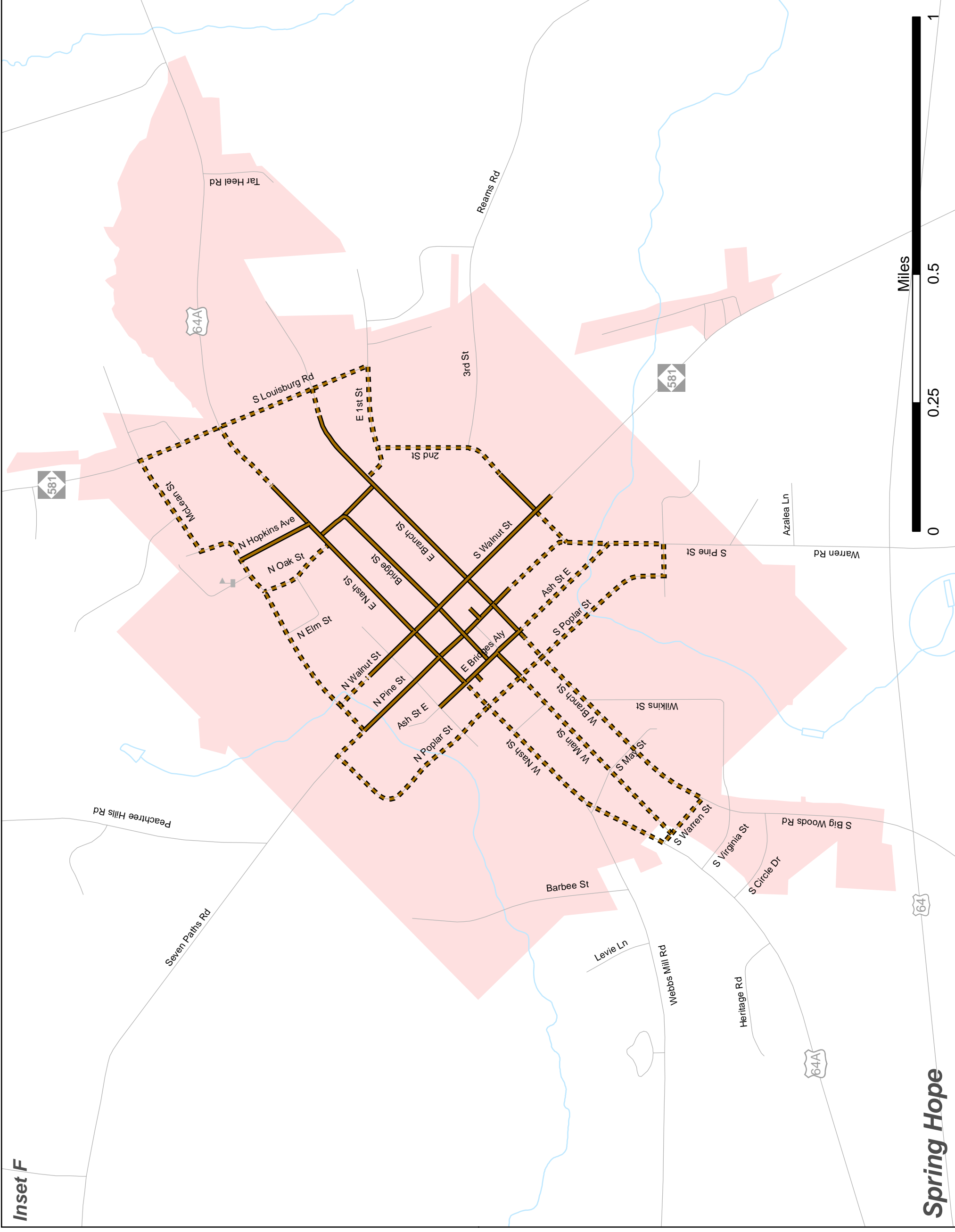
**Draft**

- |                        |          |                   |             |
|------------------------|----------|-------------------|-------------|
| <b>Sidewalks</b>       | Existing | Needs Improvement | Recommended |
| <b>Off-road</b>        | Existing | Needs Improvement | Recommended |
| <b>Multi-Use Paths</b> | Existing | Needs Improvement | Recommended |



Sheet 5B of 5

Base map date: November, 2010  
Refer to CTP document for more details



**Inset F**

**Spring Hope**



# Nash County Comprehensive Transportation Plan

Plan date: July, 2011

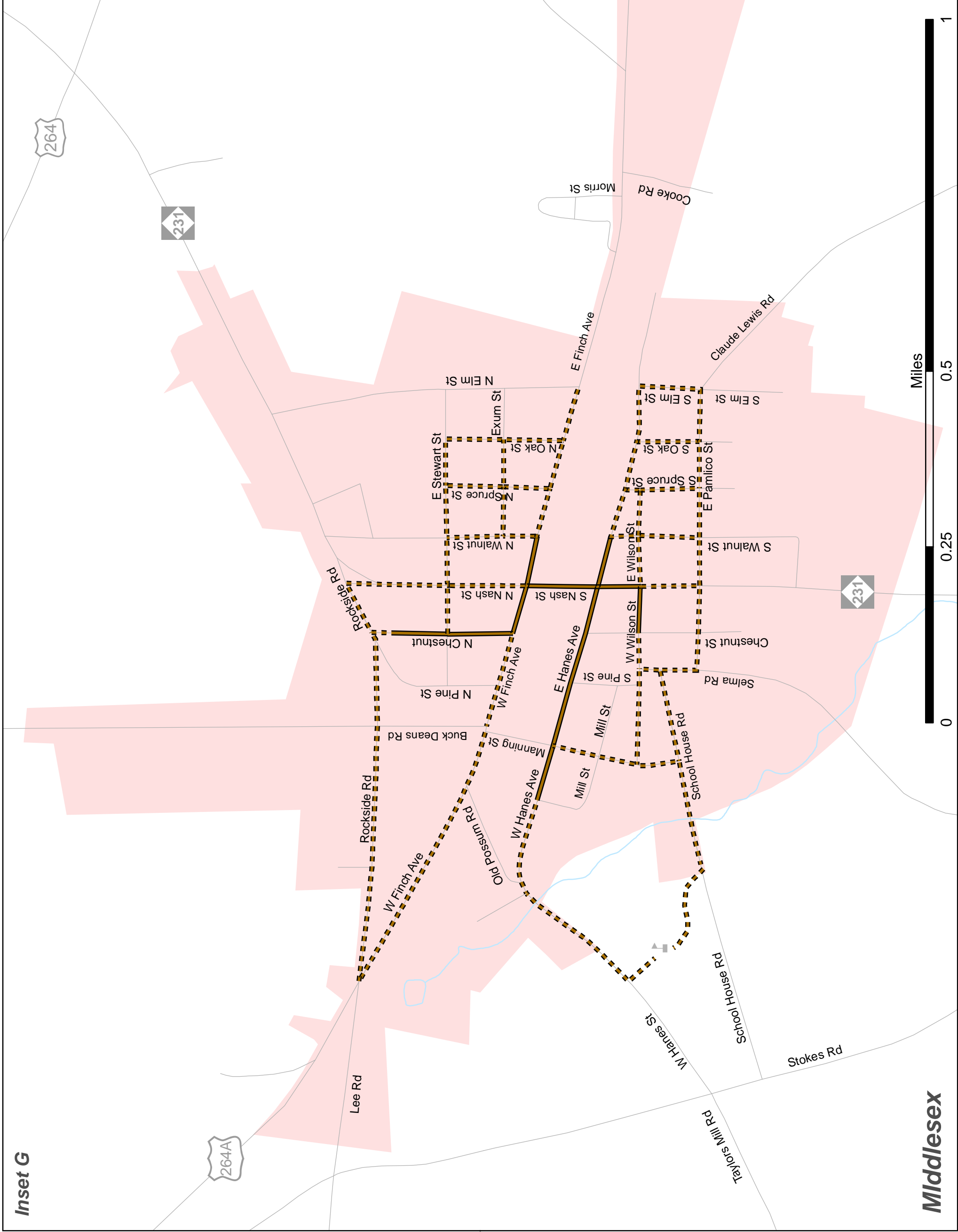
**Draft**

- |                 |  |                   |
|-----------------|--|-------------------|
| Sidewalks       |  | Existing          |
|                 |  | Needs Improvement |
|                 |  | Recommended       |
| Off-road        |  | Existing          |
|                 |  | Needs Improvement |
|                 |  | Recommended       |
| Multi-Use Paths |  | Existing          |
|                 |  | Needs Improvement |
|                 |  | Recommended       |



Sheet 5C of 5

Base map date: November, 2010  
Refer to CTP document for more details



Inset G

Middlesex



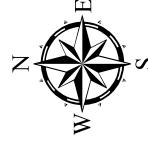


# Nash County Comprehensive Transportation Plan

Plan date: July, 2011

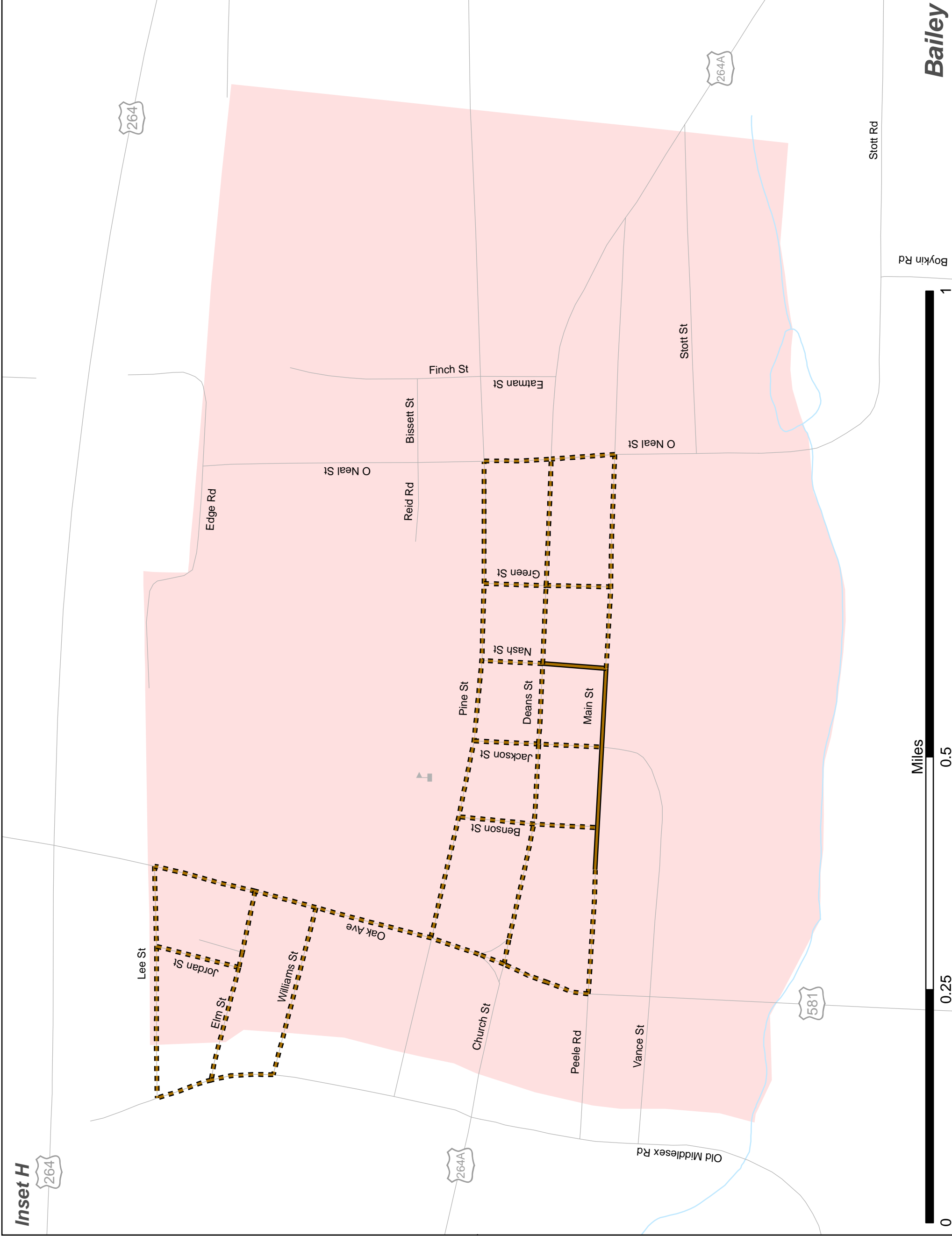
**Draft**

- |                        |          |                   |             |
|------------------------|----------|-------------------|-------------|
| <b>Sidewalks</b>       | Existing | Needs Improvement | Recommended |
| <b>Off-road</b>        | Existing | Needs Improvement | Recommended |
| <b>Multi-Use Paths</b> | Existing | Needs Improvement | Recommended |

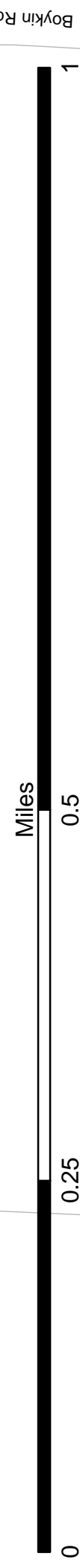


Sheet 5D of 5

Base map date: November, 2010  
Refer to CTP document for more details



**Inset H**



**Bailey**

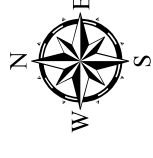


# Nash County Comprehensive Transportation Plan

Plan date: July, 2011

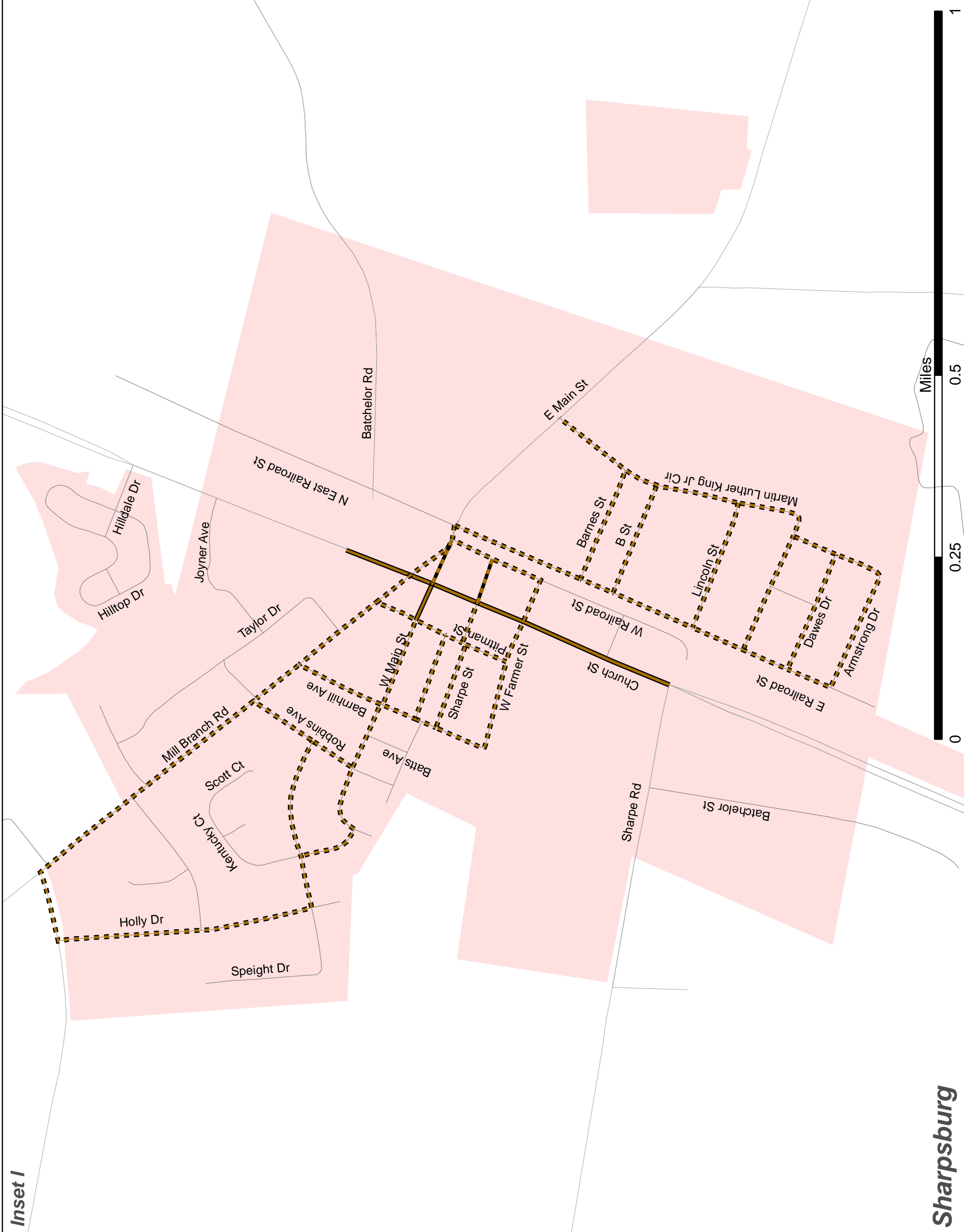
**Draft**

<b>Sidewalks</b>		Existing
		Needs Improvement
		Recommended
<b>Off-road</b>		Existing
		Needs Improvement
		Recommended
<b>Multi-Use Paths</b>		Existing
		Needs Improvement
		Recommended



Sheet 5E of 5

Base map date: November, 2010  
Refer to CTP document for more details



*Inset I*

**Sharpsburg**